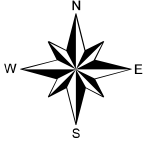


MAP 59-172



JEFFERSON COUNTY COLORADO

Ron Sandstrom Assessor



0 100 200 300 FEET

(Initially plotted at 1 inch = 100 feet, or 1:1,200)

MAP 59-172	MAP 59-173	MAP 59-174
MAP 59-175	MAP 59-176	MAP 59-177
MAP 59-178	MAP 59-179	MAP 59-180

MAP INDEX

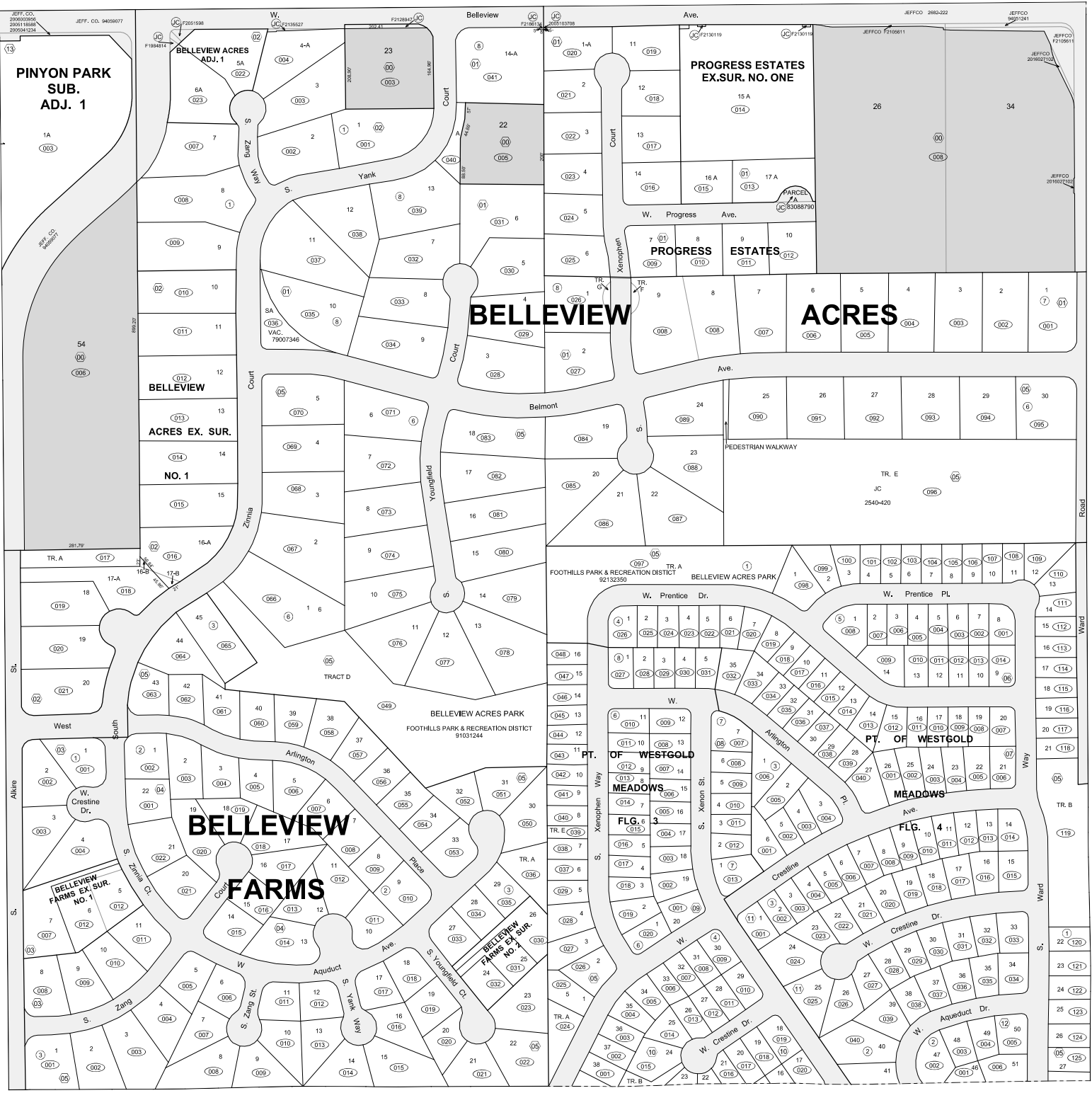
22	21	20	19	T2S	
06	05	04	03	02	01
07	08	09	10	11	12
17	18	16	15	14	13
18	17	16	15	14	13
19	20	21	22	23	24
30	29	28	27	26	25
31	32	33	34	35	36
72	71	70	69	T7S	
82	81	80		T8S	
92	91	90		T9S	
02	01			T10S	

TOWNSHIP INDEX
 Parcel boundaries shown (PB) in Jefferson County are based on the township, section, and quarter section the parcel falls within. PNs follow the pattern T55S04R04LL. TT is the two-digit township code, SS is the two-digit section number, Q is the quarter section code, 00 is the two-digit parcel block number, LL is the three-digit parcel lot number. When a parcel falls within two or more quarter sections, in most cases the PN will be based on the quarter section (along with the associated township and section) with the most area within the parcel. Township codes, section numbers, and quarter section codes can be found in the indices above. Parcel block numbers are found enclosed in hexagons (⬡) on the map. Parcel lot numbers are found enclosed in ovals (⦶) on the map.

DISCLAIMER
 Caution: This map is for assessment purposes only. It is not necessarily accurate by surveying standards. DO NOT USE FOR LEGAL CONVEYANCE. Subsequent editions with updated information will be published on a continual basis. Therefore, the information contained on this map may be modified or altered.

KEY

- Section Lines
- Tie Bar Lines
- Subdivision Lines
- Quarter Section/Tie Bar Lines
- Township Lines
- County Boundaries
- All Others
- Mapsheet Boundaries
- Rights of Way, Water, and Railroads (areas without parcel numbers)
- Metes and Bounds Associated Parcels (block numbers 99 and 00)



This map was last updated on Monday October 31, 2016 at 01:56 PM.
<http://www.co.jefferson.co.us/assessor/pdfs/map59-172.pdf>
 Projection Information:
 State Plane Coordinate System
 Colorado Central Zone (5476)
 North American Datum 1983 (NAD83)
 GRS1980 Spheroid, Units Feet
 Marginalia (only) was updated on Wednesday June 7, 2017.